

Sajag Securities Pvt Ltd

BSE Electronic Smart Trader (BEST)

BSE Electronic Smart Trader (BEST)

BSE BEST (BSE Electronic Smart Trader), is a robust, state-of-the-art hosted trading solution for Sajag Clients. The Trading software has been developed to provide an integrated system for Trading on multiple Exchange Segments BSE & NSE : Equity.

BEST Application supports Trading through Exe, Browser and Mobile. **BEST Mobile Trade** is supported on **Android** and **iOS**.

The services are specifically designed to meet the ever-changing needs of end users.

Some key features of are as follows:

- Real time Market data.
- Create Customized Market watch to Track Streaming Market Data.
- Execute orders on multiple exchanges across all assets classes in one window
- Order and Trade Management
- Real time Holdings and Limits view
- Charts – Intraday , Historic OHLC data

Link to Access / Download BSE BEST Trading Platform :

Desktop / EXE Version - URL: <https://www.bseindia.com/static/members/BEST.aspx> ----->

Go to Downloads Section and

Click on "Download BEST Trading Application Link" & run the set up.

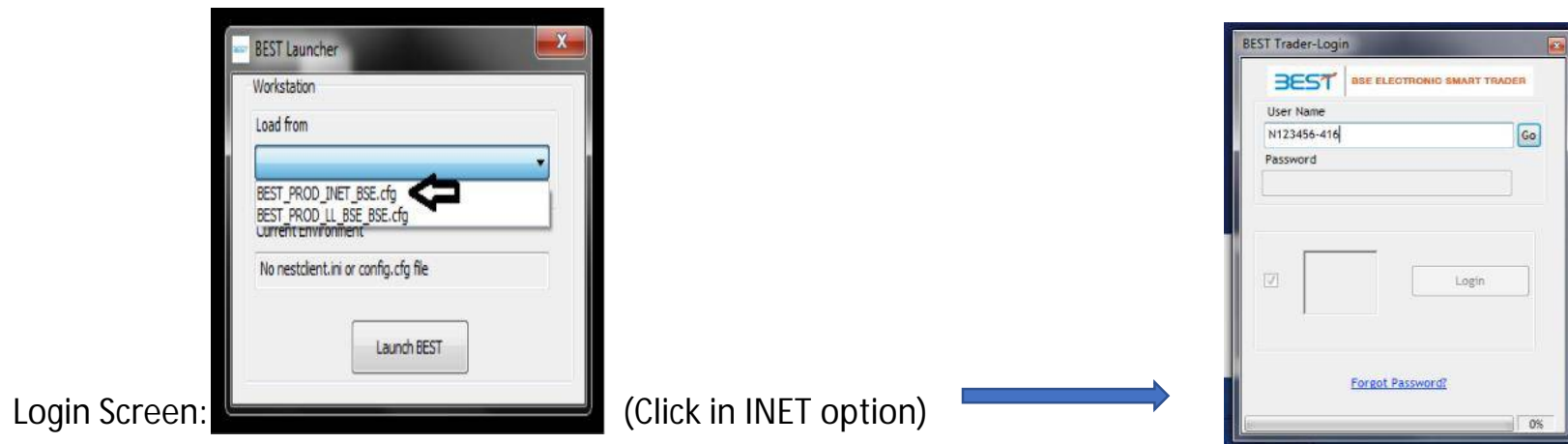
Mobile App - Please download "BEST MOBILE TRADE" from Play Store/ Appstore

Web Version



Log in <http://best1.bseindia.com> Icon on your desktop

- Double click on “BEST Trader” icon to start the application.
- Login to BEST Trader by entering user name and password as provided.
- First time login would prompt for compulsory change in password.
- Check the respective exchange to download the incremental securities/contract master.
- Quick Login: This feature enables user to quickly login to BEST Trader application by downloading open orders only. However to retrieve all orders i.e. open, completed, cancelled or rejected, user is required to re-login without checking “Quick login” option.



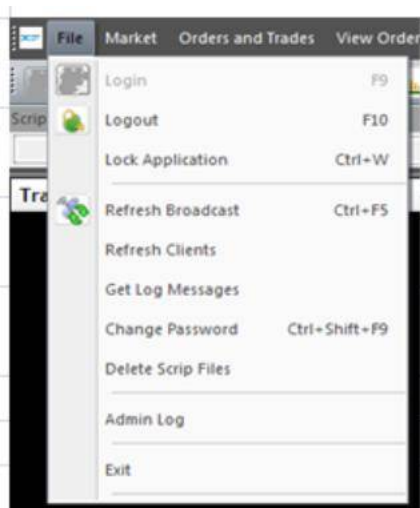
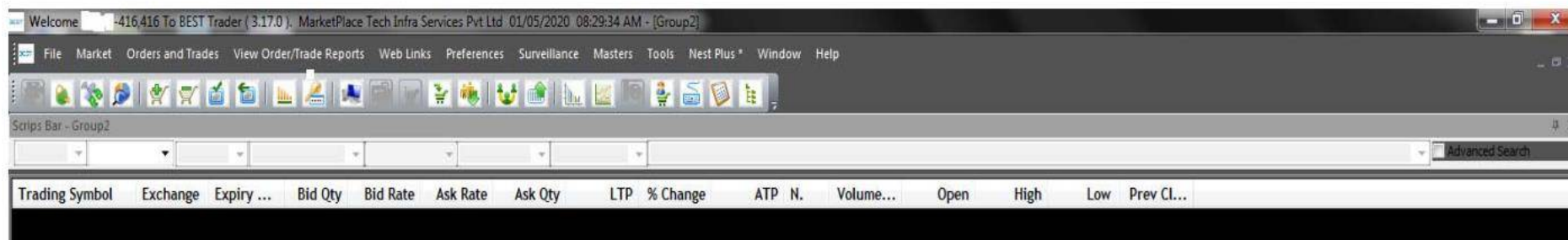
Login Screen:

(Click in INET option)

User Name : Your Trading Account Number following by -416 is User Name. E.g. N123456-416

Password : Once account is activated on BEST, you will receive an email from BSE with login credentials (Username, Login Password & Transaction Password).

Home Screen:



Logout : To exit from BEST Trader application. At the time of logout, system prompts to save the market watch group settings. Click “YES” to save the settings.

Lock Application : Please Lock BEST Trader application when trading terminal is not in use. BEST System locks the application automatically, if it is kept idle for 30 minutes.

Refresh Broadcast : This option is used when broadcast is stopped or its running delayed or incase of any disconnection from application server.

Refresh Clients : Please Click when a new client is added. The assigned new client is updated at dealer’s terminal without re-login.

Get Log Messages : To retrieve order and trade messages of the previous sessions.

Change Password : Password should be alphanumerical & should range from 6 to 12 characters

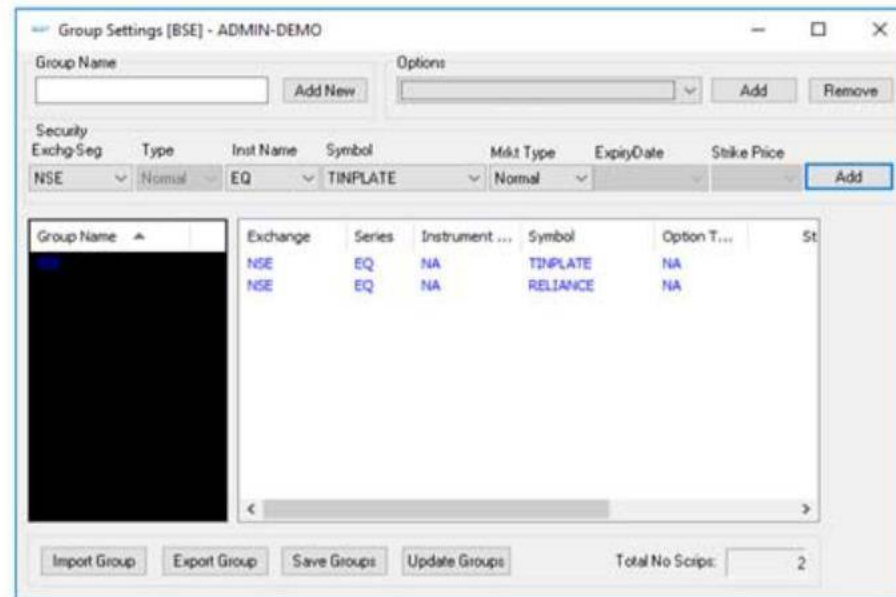
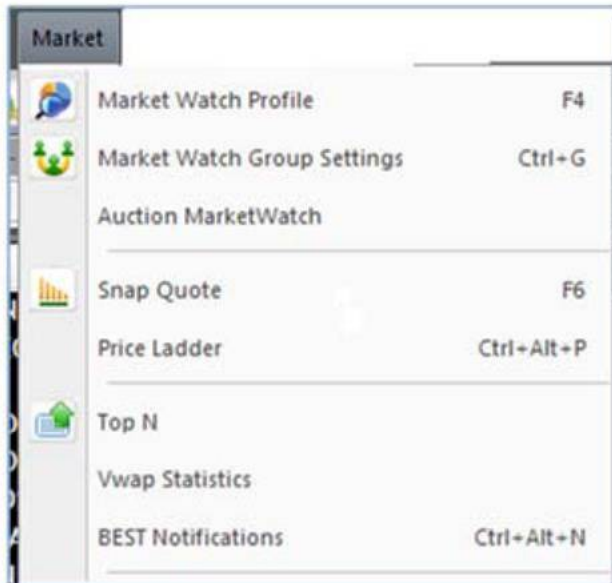
Delete Scrip Files : If all securities or contracts for any segmentis not visible, click here & re-login.

Basic Shortcuts

F1	Buy Order Entry
F2	Sell Order Entry
Ctrl+F1	AMO Buy Order Entry
Ctrl+F2	AMO Sell Order Entry
F3	Order Book
F4	Market Watch
F6	SnapQuote Window
F8	Trade Book
Alt+F9	View Holdings
Alt+F6	Dealer Net Position
F11	Admin Net Position
Shift+F7	Scrip Properties
Ctrl+I	Index View
Ctrl+S	Add Scrips in Marketwatch
Ctrl+Shift+V	RMS View Limits
F9	Login
F10	Logout
Ctrl+W	Lock Application
Ctrl+Shift+F9	Change Password

MARKET WATCH (Ctrl+G):

How to Create to Market Watch, add/ manage/ view market-watch groups:



- 1) Click on "**Market Watch Group Settings**" (Ctrl + G) to create multiple market watch with the list of scrips as per your choice
- 2) Group Name : Add Name to Create New Market Watch Group and click on "**Add New**"
- 3) Select the Group Name from the left side Menu, Select the Scrip and click on "**Add**".
- 4) You can Import a previously created market-watch group by clicking "**Import GROUP**"
- 5) You can Export your market-watch group by clicking on "**Export Group**"
- 6) Please DO REMEMBER to click on "**Save Groups**" while exiting.
- 7) You can select any one of the options from "**Options**" Menu to add multiple scrips to the market-watch group at one go

MARKET WATCH PROFILE (F4):

Exchange	Series/Syqy	Symbol	Last Tr.	Best Bid	Best Ask	Last Tr.	Open	High Price	Low Price	Best Bid	Best Ask	Prev
ISE	B	SPPOWER	220	0	0	6.12	6.60	6.40	5.72	0.00	0.00	0.00
ISE	A	ABO	3	0	0	1823.10	1825.75	1820.00	1517.00	0.00	0.00	181
NSE	EQ	RELIANCE	1	0	0	892.10	877.00	898.00	871.00	0.00	0.00	85
NSE	EQ	TNPATRE	2	0	200.0	222.55	230.00	230.95	205.60	0.00	0.00	22

Market Status: Exchange - ISE, CM 06-Feb-2018 16:30:00 The Closing Session has ended.
 Market Status: Exchange - ISE, CM 06-Feb-2018 16:30:00 The Closing Session has ended.
 Market Status: Exchange - NSE, CM 06-Feb-2018 16:30:00 The Closing Session has ended.
 Market Status: Exchange - NSE, CM 06-Feb-2018 16:30:00 The Closing Session has ended.

- 1) To add Scrip Bar to Market Watch screen, please Press **Ctrl + S**
- 2) To add securities to the Market Watch, select Exchange, Group, Scrip Name and press Enter.
- 3) You can Customize the Market Watch field and the order in which these fields should appear on the market watch screen by right click on the header and then on reposition column
- 4) All the fields in the market watch are sorted in ascending/descending order. Drag and drop or cut (Ctrl+X) and paste (Ctrl+V) the security as per convenience.
- 5) You can keep a track of multiple groups simultaneously by opening multiple market watches and tile them accordingly.
- 6) You can Customize the Market Watch Screen for Font Type, Font Size and Colour by **Right Click on Market Watch Screen** and Click on **Customize**.
- 7) You can see Derivatives Chain and other tools by **Right Click on Market Watch screen** and then click on **Tools**.

ORDER ENTRY : (F1/F2 or +/- keys)

Select security in market watch and press F1 or '+' / F2 or '-' key for buy or sell order entry.

The image displays two screenshots of the BSE Electronic Smart Trader (BEST) interface. The top screenshot is titled 'Buy Order Entry - ADMIN-DEMO' and has a blue header. The bottom screenshot is titled 'Sell Order Entry - ADMIN-DEMO' and has a red header. Both screens show the same security, RELIANCE, with a quantity of 1. The Buy Order Entry screen shows a price of 879.45, and the Sell Order Entry screen shows a price of 879.35. Both screens have a 'Submit' button and various dropdown menus for order type, validity, and client information.

Exhg-Seg	OrderType	Pro/Cli	Inst Name	Symbol	Type	Strike Price	Expiry Date	Mkt Prot	Auc No
BSE	LIMIT	CLI	500325	RELIANCE	A	Normal		0	

Qty	Price	Tr. Price	Disc Qty	Prod Type	Validity	Client Id	Client Name	Participant code	Validity Date	No of Days
1	879.45	0	0	NRML	EOS	TEST-DEMO	TEST		2/ 6/2018	0

Exhg-Seg	OrderType	Pro/Cli	Inst Name	Symbol	Type	Strike Price	Expiry Date	Mkt Prot	Auc No
BSE	LIMIT	CLI	500325	RELIANCE	A	Normal		0	

Qty	Price	Tr. Price	Disc Qty	Prod Type	Validity	Client Id	Client Name	Participant code	Validity Date	No of Days
1	879.35	0	0	NRML	EOS	TEST-DEMO	TEST		2/ 6/2018	0

Invoking buy order entry screen on any security or contract in market watch, picks up the default lot size of the contract or the predefined lot size (if specified in preference) and also the best sell rate by default.

Invoking the sell order entry screen on any security or contract in market watch, picks up the default lot size or the predefined lot size (if specified in preference) and also the best buy rate by default.

Order Types : LIMIT: Limits orders / MARKET: Market orders / SL: Stop Loss Limit

Validity : Day : Validity for a DAY / IOC : Immediate or Cancel / EOS : End of Session

Product Types : CNC (Cash and Carry or Delivery Order) / MIS (Margin Intraday Square off)/ NRML (Normal or Trading order)- For FO Segment

ORDER BOOK : (F3)

Press F3 from market watch OR Go to 'Orders and Trades - Order Book' to view order book.

Order Book - ADMIN-7009														
Open Orders														
Exhg...	UserId	Orde...	Accou...	Parti...	BESTOrderNo	Buy/Sell	Trading...	Total...	Pendi...	Price	Status	Reje...	BEST UpdateTime	ExchangeO
BSE	ADMIN-7009	LIMIT	M1-7009		1802080000000006	BUY	ABB	1	1	1300.00	open		08-Feb-2018 11:10:36	1518067262779
BSE	ADMIN-7009	LIMIT	M1-7009		1802080000000002	BUY	RELIANCE	1	1	900.00	open		08-Feb-2018 11:09:10	1518068238183
Completed Orders														
Exhg...	UserId	Accou...	Orde...	Prod...	Parti...	Buy/Sell	Tradin...	Total...	Pendi...	Discl...	Price	Status	Rejection Reason	BESTOrderN
BSE	ADMIN-7009	M1-7009	LIMIT	NRML		BUY	TRF	1	1	0	228.00	rejected	LIMIT PRICE BEYOND CIRCUIT LIMITS	18020800000
BSE	ADMIN-7009	M1-7009	LIMIT	NRML		BUY	TRF	1	1	0	218.00	rejected	LIMIT PRICE BEYOND CIRCUIT LIMITS	18020800000
BSE	ADMIN-7009	M1-7009	LIMIT	NRML		BUY	TRF	1	1	0	210.00	rejected	LIMIT PRICE BEYOND CIRCUIT LIMITS	18020800000
BSE	ADMIN-7009	M1-7009	LIMIT	NRML		BUY	TINPLATE	1	1	0	200.00	rejected	LIMIT PRICE BEYOND CIRCUIT LIMITS	18020800000

Display all Orders Filter Orders Open Orders: 2 Completed Orders: 4

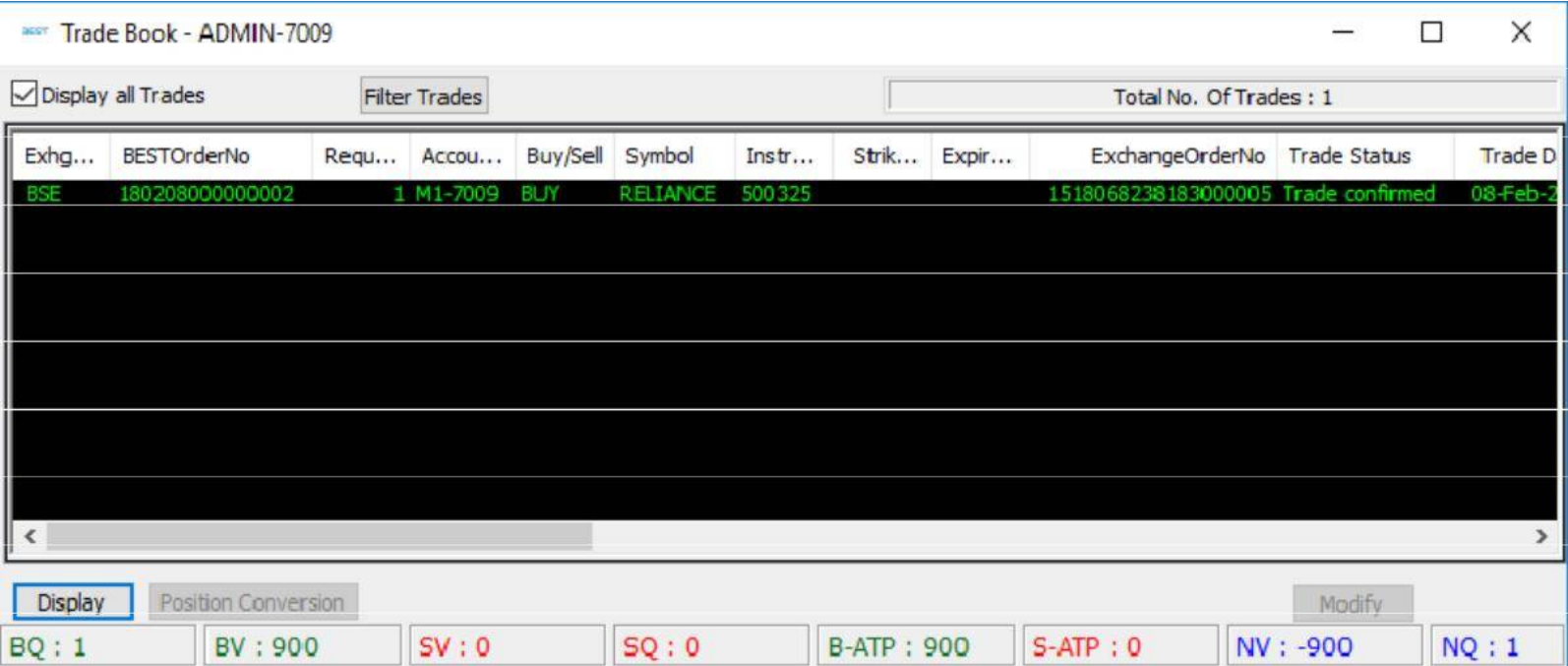
Display Modify Cancel Exit Cancel All

BQ : 2 BV : 2200.00 SV : 0.00 SQ : 0 NV : -2200.00 NQ : 2

- 1) Order book displays buy or sell order placed by you in different exchanges. Order book displays traded, untraded, cancelled or rejected order status.
- 2) Once an open order is fully completed, the same is shifted from 'Open Order' window to 'Completed Order' window.
- 3) Order is modified or cancelled till it is not fully completed at exchange. However, in case of partially filled order, order is modifiable or is cancellable for unfilled quantity.
- 4) Order information of selected security or contract is viewed by unchecking 'Display all order'. However to view all the orders placed click on 'Display' button or key F3 on order book.
- 5) Double click on the orders to view the order history.

TRADE BOOK : (F8)

Press F8 from market watch or Go to 'Orders and Trades - Trade Book'.



Trade book displays completed or traded buy or sell orders across exchanges.

Use the position conversion option to convert the trade from one product type to another. E.g. MIS (Margin Intraday square off) to CNC (Cash and Carry).

Trade information of selected security or contract is viewed by unchecking 'Display all trade'. However to view all the trades executed click on 'Display' button or key F8 on trade book.

NET POSITIONS : (Alt + F6)

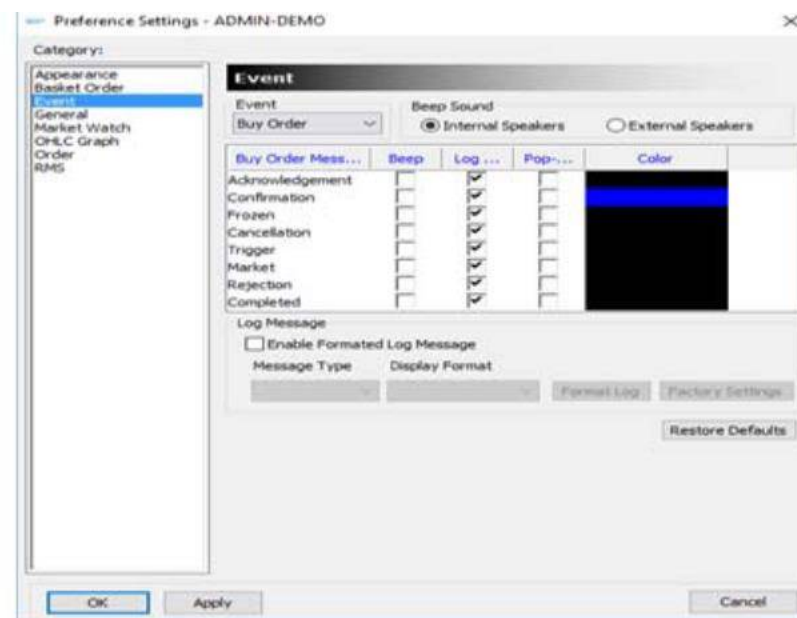
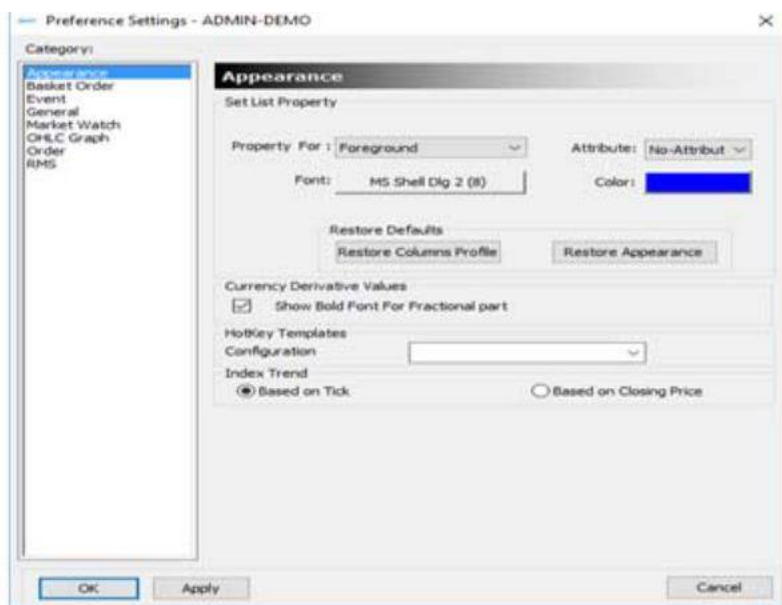
Press Alt + F6 or Go to 'Orders and Trades – Net Positions' to view 'Net Positions' window



- 1) It displays positions of all the clients mapped and orders placed by respective user.
- 2) You may customize the display by using filter option by pressing on 'Ctrl + F' on the Position List window.
- 3) You may also Filter the display based on Segment / Trading Symbols / Products & Account IDs.
- 4) Real time mark to market loss value is computed and displayed in the status bar.
- 5) Square off clients position depending on the following criteria: Long positions & Short position All positions
- 6) Convert position from NRML to MIS or NRML to CNC or MIS to CNC or vice versa. Also net position can be converted into buy or sell position.

PREFERENCES MENU : USER SETTINGS

User can customize many features available on terminal using this Menu.



Appearance

To choose font name and font size for the data to appear.

To set the color for Background or Foreground in the screen

To set the trend colour changes

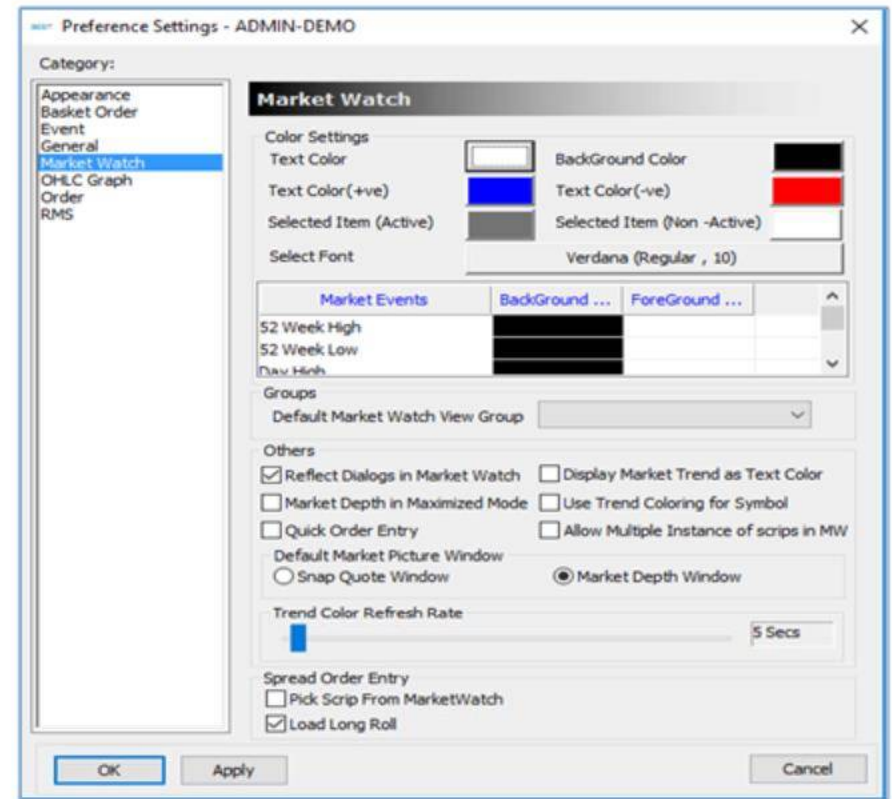
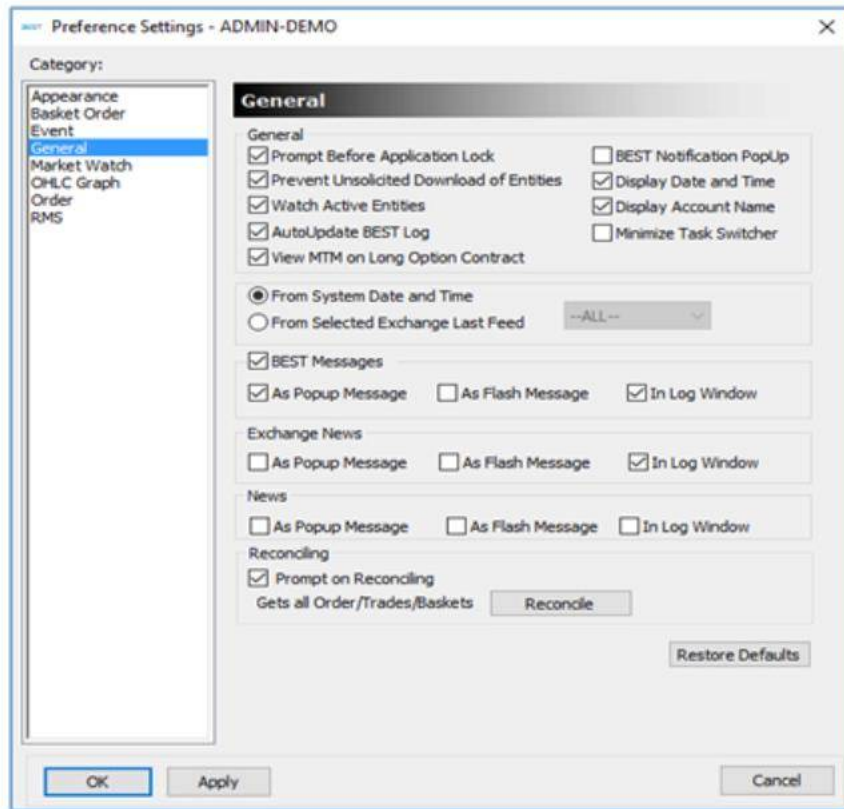
Event

To customize events like order confirmation, rejection, SL order getting triggered, order getting executed, etc.

To subscribe or unsubscribe for the messages

To set pop up messages or a specific event

BSE Electronic Smart Trader (BEST)



General

To display the account name in Order Book, Trade Book, Net position and Admin Position window

To enable / disable popup, Flash and Log Messages to display for BEST messages, Exchange, News, admin and system messages on the screen

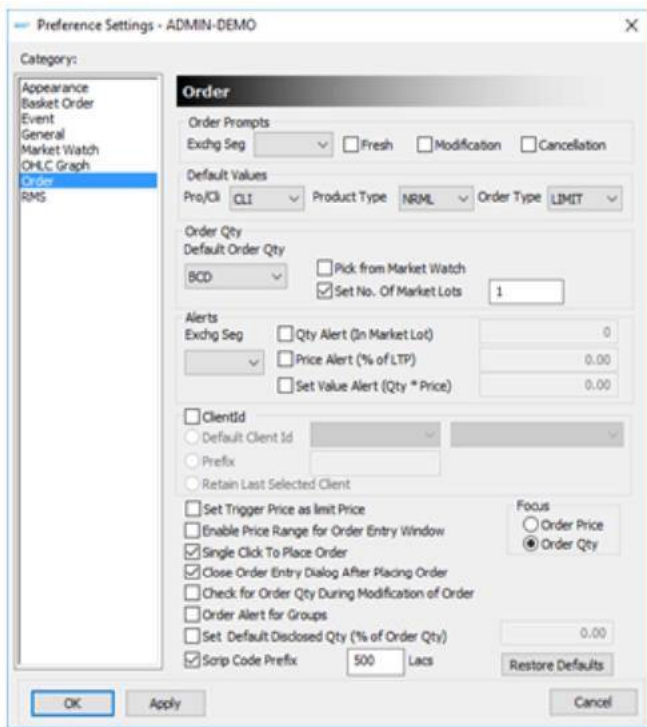
To Reconcile all orders, trades and baskets on disconnection from BEST.

Market Watch

To set the background color, text colour, the uptick/downtick color, the font style, size, etc

To set the background and foreground color for 52 Week High, 52 Week Low, Day High and Day Low

To set trend coloring for symbol. It will display trend color in symbol field.



ORDER
To set Order related settings
To set default product type to appear in order entry screen
To set default order quantity selection type
To set default client id, Prefix or retain Last Selected Client for order entry dialog.
To enable or disable Single click to place order from order entry dialog.
To enable or disable Closing order entry dialog after placing order.
To set the Default disclose Quantity in Order Entry window.
To set focus on Order Price / Order Quantity in order entry dialog.