



DATE	STOCK	RECOMD	ENTRY PRICE	TARGET	STOP LOSS
24.5.2021	BANKBARODA	BUY	80	95	72
24.5.2021	KOTAKBANK	BUY	1757	1810	1710
24.5.2021	M&MFIN	BUY	160	172	152

**NOTE –These Stocks are recommended only for short term investment (Stop Loss should be followed Daily closing basis).**

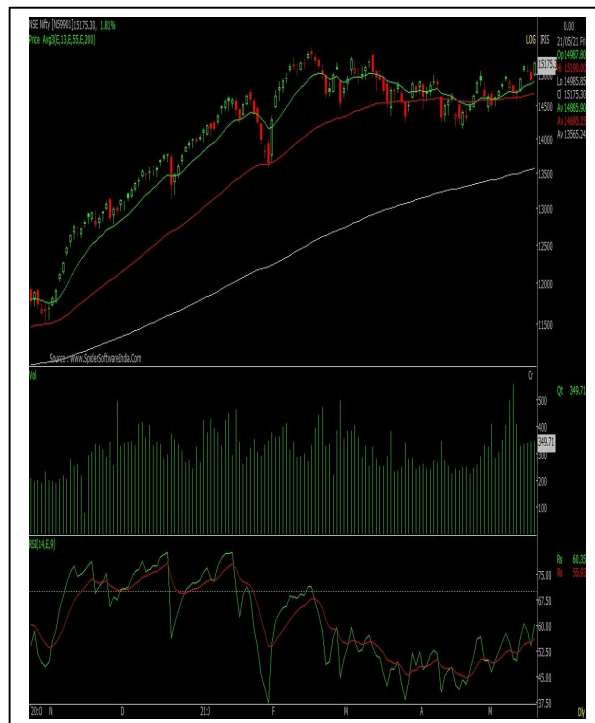
**TECHNICAL OUTLOOK**

NIFTY WEEKLY CLOSE – 15175.30 (↑ 497.50)

Last week Nifty began on a positive note and moved higher to cross the psychologically important 15000 level. Nifty maintained the positive move and closed the week at 15175 with a gain of 497 points.

During the week, Nifty has moved above its key daily as well as weekly EMAs. Daily as well as weekly RSI is has also moved above respective averages. Nifty has formed a green candle at end of the week.

Going ahead, 15300 remains an immediate resistance. A move above this could take Nifty to test 15460. On the other hand, immediate support is placed at 14880 below which support is placed at 14700.





#### WEEKLY INVESTMENT IDEAS REVIEW

DATE	STOCK	RECOMD	ENTRY PRICE	TARGET	STOP LOSS	TODAY CLOSE	NET CHANGE (%)	REMARK
17.5.2021	ITC	BUY	212	220	205	209.05	-1.41	Exit (High 217)
17.5.2021	LT	BUY	1415	1470	1379	1418.05	0.22	Exit (High 1441)
17.5.2021	PTC	BUY	93	105	85	92.20	-0.87	Exit (High 101)

#### WEEKLY MARKET REVIEW

### Sensex regains 50,000; Nifty conquers 15,000

The domestic equities logged robust returns in the week led by broad-based buying across sectors. Better-than-expected corporate earnings and positive global cues boosted sentiment. The undertone of the market was upbeat amid hopes of reopening of economic activity soon as fresh daily COVID-19 cases declined. Investors' risk appetite improved as the vaccination drive is expected to pick up pace in the coming weeks. The COVID-19 recoveries in India outnumbered fresh cases, helped by the extended lockdowns by majority states. The launch of first batch of anti-COVID drug 2-DG, developed by the DRDO lifted sentiment.

In the week ended on Friday, 21 May 2021, the Sensex jumped 1,807.93 points or 3.71% to settle at 50,540.48. The Nifty 50 index rallied 497.50 points or 3.39% to settle at 15,175.30. The BSE Mid-Cap index spurted 977.96 or 4.77% to settle at 21,485.75. The BSE Small-Cap index surged 929.86 points or 4.19% to settle at 23,130.40.

State Bank of India soared 11.26%. It reported an 80% jump in standalone net profit to Rs 6,450.75 crore on a 7% rise in total income to Rs 81,326.96 crore in Q4 FY21 over Q4 FY20. The bank's operating profit (before provisions and contingencies) increased by 25.2% year-on-year to Rs 19,700 crore in Q4 FY21.

Cipla advanced 2.52%. Consolidated net profit surged 68.1% to Rs 413.38 crore on 6.6% rise in net sales to Rs 4,584.88 crore in Q4 FY21 over Q4 FY20. EBITDA jumped 22% y-o-y to Rs 796 crore in Q4 FY21.

Larsen & Toubro rose 0.22%. L&T reported 3% rise in consolidated net profit to Rs 3,293 crore on 9% increase in revenues to Rs 48,088 crore in Q4 FY21 over Q4 FY20. Revenues registered a sequential growth of 35%. The consolidated order book of the group stood at Rs 3,27,354 crore as at 31 March 2021, registering a robust growth of 8% over 31 March 2020.

Reliance Industries rallied 3.31%. Reliance Jio, India's leading 4G and mobile broadband digital service provider, is constructing the largest international submarine cable system centered on India.

HCL Technologies gained 2.24%. It announced the expansion of investment in the United Kingdom with the hiring of 1,000 technology professionals to support its clients in the UK and around the world.

Sun Pharmaceutical Industries slipped 0.11%. LIC purchased 4.83 crore equity shares or 2.016% stake of the drug major. Post transaction, LIC's stake in Sun Pharma has increased to 7.026% from 5.01% held earlier.

Tata Motors added 0.24%. On a consolidated basis, the auto major reported net loss of Rs 7,605.40 crore in Q4 FY21 lower than net loss of Rs 9,894.25 crore in Q4 FY20. Total revenue increased 41.8% y-o-y to Rs 88,627.90 crore in Q4 FY21.

Indian Oil Corporation (IOCL) climbed 3.37%. It posted standalone net profit of Rs 8,781.30 crore in Q4 FY21 as compared a net loss of Rs 5,185.32 recorded in Q4 FY20. The company's revenue from operations increased by 17.7% to Rs 1,63,605.67 crore in Q4 FY21 over Q4 FY20.

Tata Steel declined 1.73%. Fitch Ratings has upgraded India's Tata Steel's (TSL) Issuer Default Rating (IDR) to 'BB', from 'BB-'. The outlook is stable. The upgrade follows a significant improvement in TSL's financial profile in the financial year ended March 2021 (FY21), driven by a jump in margins following a faster recovery in the global steel market from the impact of the coronavirus pandemic than expected. The agency expects TSL's leverage to remain stable over the next three years, it said.

Source: [www.capitalmarket.com](http://www.capitalmarket.com)



### SAJAG SECURITIES PVT. LTD.

MEMBER: NATIONAL STOCK EXCHANGE OF INDIA LTD.

MEMBER: BOMBAY STOCK EXCHANGE LTD.

DEPOSITORY PARTICIPANT: NATIONAL SECURITIES DEPOSITORY LTD.

DEPOSITORY PARTICIPANT: CENTRAL DEPOSITORY SERVICES LTD.

33/15 - B, KARVE ROAD, REGENT CHAMBERS, PUNE - 411004, TEL: 91-20-66014737, FAX: 91-20-25302555

email: [business@sajag.co.in](mailto:business@sajag.co.in) / [investorgrievance@sajag.co.in](mailto:investorgrievance@sajag.co.in)

NSE TM ID - 07549

BSE TM ID - 3105

NSDL DP ID: IN303647

CDSL DP ID: 12062400

SEBI Regn. No. INZ000221337

**Disclosure:** This report is issued by Sajag Securities Pvt. Ltd. (SSPL), a stock broking company, which is regulated by SEBI and its research activities are as per SEBI Guidelines for Research Analysts December 2014. Registration Number: INH000001923. This report is prepared and distributed by SSPL for information purpose only. SSPL and the research analyst(s) who prepared this report do not have any long or short positions in derivatives markets in any of the above mentioned securities. SSPL or the research analyst(s) do not have ownership of 1% or more in the company. The research analyst(s) who prepared this research report hereby certifies that the views expressed in this research report accurately reflect the research analyst's personal views about all of the subject issuers and/or securities, that the analyst(s) have no known material conflict of interest and no part of the research analyst's compensation was, is or will be, directly or indirectly, related to the specific views or recommendations contained in this research report.

**Disclaimer:** Neither the information contained herein nor any opinion expressed should be construed or deemed to be construed as solicitation or as offering advice for the purposes of the purchase or sale of any security or investment or derivatives. The information and opinions contained in the report were considered by SSPL to be valid when published. The report also contains information provided to SSPL by third parties. The source of such information will usually be disclosed in the report. While SSPL has taken all responsible steps to ensure that this information is correct, SSPL does not offer any warranty as to the accuracy or completeness of such information. Any person placing reliance on the report to undertake trading does so entirely at his/her own risk and SSPL does not accept any liability as a result. Securities and Derivatives markets may be subject to rapid and unexpected price movements and past performance is not necessarily a guide to future performance. The report does not have regard to the specific investment objective, financial situation and the particular needs of any specific person who may receive this report. Investor must undertake independent analysis with their own legal, tax and financial advisors and reach their own decision regarding the appropriateness of investing in any securities or investment strategies discussed and recommended in this report and should understand that statements regarding future prospects may not be realized. In no circumstances be it used or considered as an offer to sell or a solicitation of any offer to buy or sell the securities mentioned in it. The information contained in the research reports may have been taken from trade and statistical services and other sources, which we believe reliable. SSPL does not guarantee that such information is accurate or complete and it should not be relied upon as such. Any opinions expressed reflect judgments at this date and are subject to change without notice. The target prices mentioned in the report are based on certain assumptions as of the date appearing in the material and may be subject to change from time to time without notice.