

DATE	STOCK	RECOMD	ENTRY PRICE	TARGET	STOP LOSS
9.10.2023	AMBUJACEM	BUY	435	445	428
9.10.2023	DLF	BUY	548	570	528
9.10.2023	TITAN	BUY	3309	3400	3225

NOTE –These Stocks are recommended only for short term investment (Stop Loss should be followed Daily closing basis)

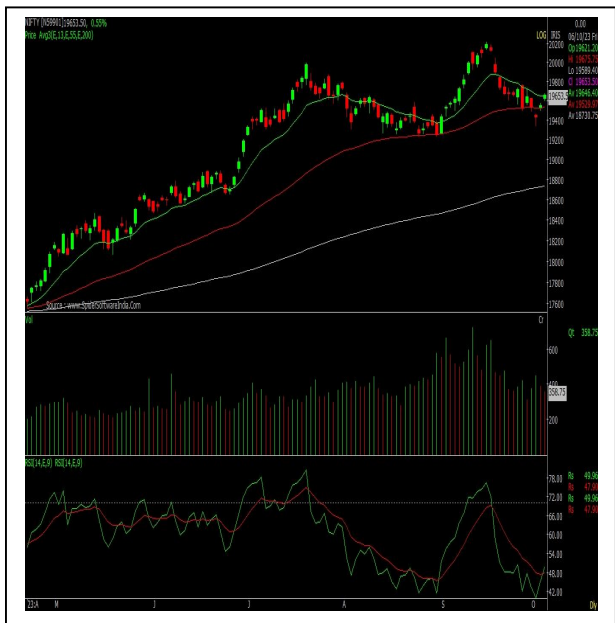
TECHNICAL OUTLOOK

NIFTY WEEKLY CLOSE – 19653.50 (↑ 15.20 pts)

Last week Nifty began on a mild note and moved lower near 19300. It however then saw buying support and Nifty recouped the losses. Nifty closed the week near 19653 with a gain of 15 points.

Nifty moved above its 13 day EMA and remains above other key averages on daily as well as weekly chart. Daily averages has crossed above its average while weekly RSI is below its average.

Going ahead, 19800 is the immediate resistance above which Nifty will face resistance near 20000. On the other hand support is placed near 19300-19200.



WEEKLY INVESTMENT IDEAS REVIEW

DATE	STOCK	RECOMD	ENTRY PRICE	TARGET	STOP LOSS	TODAY CLOSE	NET CHANGE (%)	REMARK
3.10.2023	GRASIM	BUY	1942	1980	1906	1903.3	-2.03	Stop loss hit
3.10.2023	IDFCFIRSTB	BUY	95	102	90	91.4	-3.94	Exit
3.10.2023	NTPC	BUY	245	255	236	235.55	-4.01	Stop loss hit

WEEKLY MARKET REVIEW**Market snaps two-week losses; Nifty ends above 19,650**

The benchmark indices ended the week on a flat note with decent gains, snapping the two-week downfall. Positive signals from global markets, PMI data, and a correction in crude prices boosted market sentiment. Investors found solace in the recovery seen in global markets, a marginal pullback of US treasury yields and the dollar index. The Reserve Bank of India's Monetary Policy Committee at its meeting decided to keep the policy repo rate unchanged at 6.50%

In the week ended on Friday, 6 October 2023, the S&P BSE Sensex rose 167.22 points or 0.25% to settle at 65,995.63. The Nifty 50 index added 15.20 points or 0.08% to close at 19,653.50. The BSE Mid-Cap index shed 0.81% to end at 32,077.66. The BSE Small-Cap index gained 0.79% to close at 37,860.58.

Adani Ports and Special Economic Zone added 0.59%. It has recorded a 26% y-o-y jump in cargo volumes in September 2023, reaching 32.8 MMT.

Vedanta fell 0.09%. It announced demerger of various companies, which will be listed. Meanwhile, the miner announced that its total aluminum production jumped 2% to 5,94,000 tonnes in Q2 FY24 as compared with 5,84,000 tonnes in Q2 FY23.

Coal India (CIL) declined 2.51%. CIL produced about 333 million tonnes (MTs) of coal ending H1 FY24, posting a strong 11.3% y-o-y growth. Output for the month of September 2023 was 51.4 MTs, a 5.8 MTs jump or a growth of 12.6%.

HDFC Bank added 0.49% after the advances aggregated to approximately Rs 23,54,500 crore as of 30 September 2023, recording a growth of around 57.7% y-o-y.

Bajaj Finance jumped 4.59%. The new loans booked during Q2 FY24 grew by 26% to 8.53 million as compared to 6.76 million in Q2 FY23.

Maruti Suzuki India slipped 2.84%. The total sales in the month of September 2023 grew 2.86% to 181,343 units as compared with 176,306 units sold in the same period last year.

Larsen & Toubro rose 2.37%. It has secured a 'significant' order for its power business, L&T Energy – Power from West Bengal Power Development Corporation.

Sun Pharmaceutical Industries declined 2.64%. The USFDA has accepted the NDA for Deuruxolitinib, an investigational oral selective inhibitor of Janus kinases JAK1 and JAK2.

Mahindra & Mahindra shed 0.42%. Its overall auto sales for the month of September 2023 stood at 75,604 vehicles, registering the growth of 17.24% as against 64,486 vehicles sold in September 2022.

Hero MotoCorp fell 0.69%. The 2-wheeler major's total sales increased by 3.17% in September 2023 y-o-y.

Bajaj Auto skid 1.22%. The total auto sales fell marginally to 3,92,558 units in September 2023.

TVS Motor Company slid 0.91%. Its total sales jumped 6% in September 2023, with sales of 402,553 units as compared with 379,011 units sold in the month of September 2022.

UltraTech Cement shed 0.63%. Its consolidated cement sales volume grew 16% to 26.69 million tons (MT) in Q2FY24 as against 23.10 MT in Q2 FY23.

Tata Motors declined 1.31%. Tata Motors Group global wholesales in Q2 FY24 were at 3,42,376 units, higher by 7%, as compared to Q2 FY23.

Source: www.capitalmarket.com

SAJAG SECURITIES PVT. LTD.

MEMBER: NATIONAL STOCK EXCHANGE OF INDIA LTD.

MEMBER: BOMBAY STOCK EXCHANGE LTD.

DEPOSITORY PARTICIPANT: NATIONAL SECURITIES DEPOSITORY LTD.

DEPOSITORY PARTICIPANT: CENTRAL DEPOSITORY SERVICES LTD.

33/15 - B, KARVE ROAD, REGENT CHAMBERS, PUNE - 411004, TEL: 91-20-66014737, FAX: 91-20-25302555

email: business@sajag.co.in / investorgrievance@sajag.co.in

NSE TM ID - 07549

BSE TM ID - 3105

NSDL DP ID: IN303647

CDSL DP ID: 12062400

SEBI Regn. No. INZ000221337

Disclosure: This report is issued by Sajag Securities Pvt. Ltd. (SSPL), a stock broking company, which is regulated by SEBI and its research activities are as per SEBI Guidelines for Research Analysts December 2014. Registration Number: INH000001923. This report is prepared and distributed by SSPL for information purpose only. SSPL and the research analyst(s) who prepared this report do not have any long or short positions in derivatives markets in any of the above mentioned securities. SSPL or the research analyst(s) do not have ownership of 1% or more in the company. The research analyst(s) who prepared this research report hereby certifies that the views expressed in this research report accurately reflect the research analyst's personal views about all of the subject issuers and/or securities, that the analyst(s) have no known material conflict of interest and no part of the research analyst's compensation was, is or will be, directly or indirectly, related to the specific views or recommendations contained in this research report.

Disclaimer: Neither the information contained herein nor any opinion expressed should be construed or deemed to be construed as solicitation or as offering advice for the purposes of the purchase or sale of any security or investment or derivatives. The information and opinions contained in the report were considered by SSPL to be valid when published. The report also contains information provided to SSPL by third parties. The source of such information will usually be disclosed in the report. While SSPL has taken all responsible steps to ensure that this information is correct, SSPL does not offer any warranty as to the accuracy or completeness of such information. Any person placing reliance on the report to undertake trading does so entirely at his/her own risk and SSPL does not accept any liability as a result. Securities and Derivatives markets may be subject to rapid and unexpected price movements and past performance is not necessarily a guide to future performance. The report does not have regard to the specific investment objective, financial situation and the particular needs of any specific person who may receive this report. Investor must undertake independent analysis with their own legal, tax and financial advisors and reach their own decision regarding the appropriateness of investing in any securities or investment strategies discussed and recommended in this report and should understand that statements regarding future prospects may not be realized. In no circumstances be it used or considered as an offer to sell or a solicitation of any offer to buy or sell the securities mentioned in it. The information contained in the research reports may have been taken from trade and statistical services and other sources, which we believe reliable. SSPL does not guarantee that such information is accurate or complete and it should not be relied upon as such. Any opinions expressed reflect judgments at this date and are subject to change without notice. The target prices mentioned in the report are based on certain assumptions as of the date appearing in the material and may be subject to change from time to time without notice.